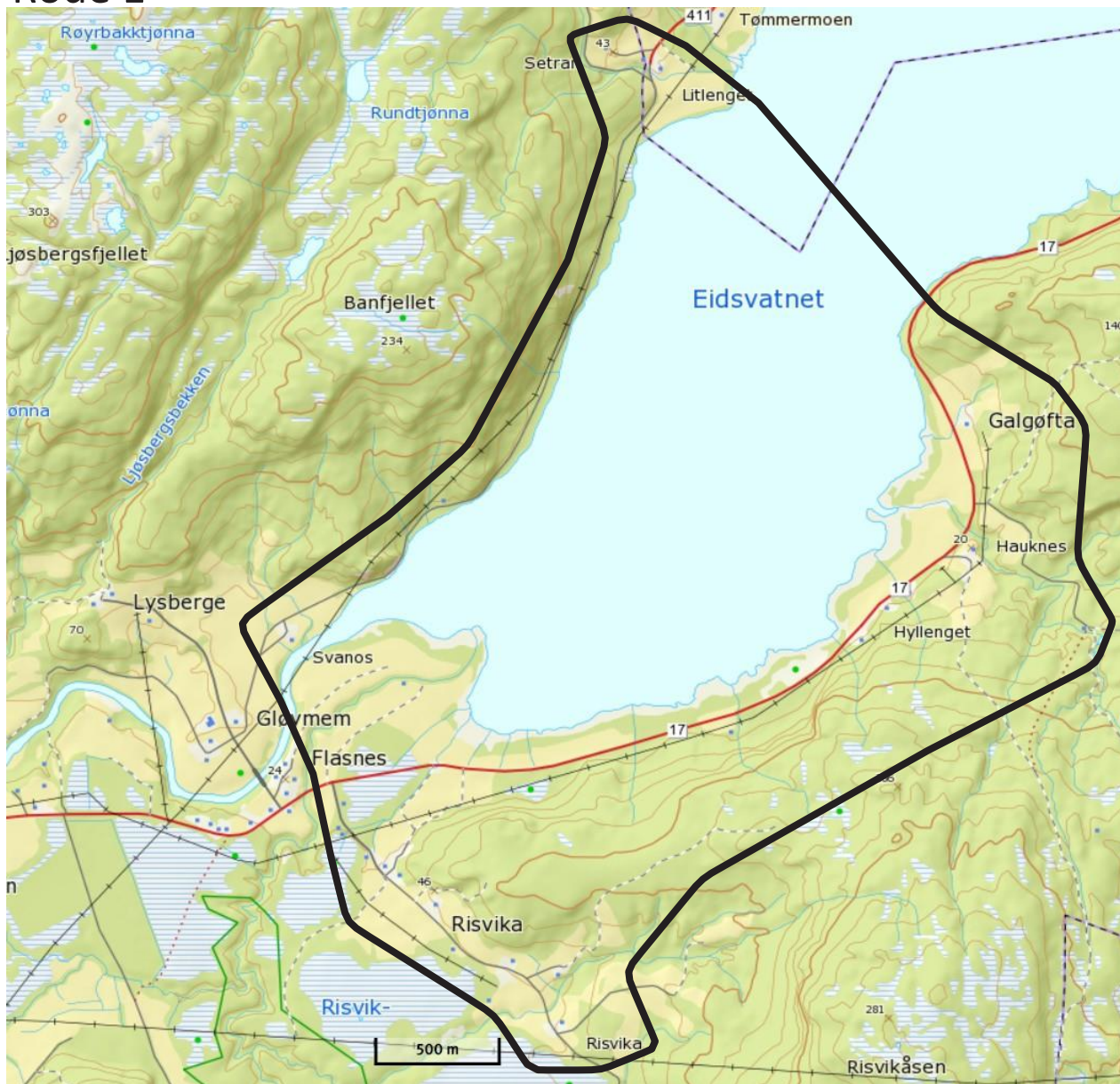
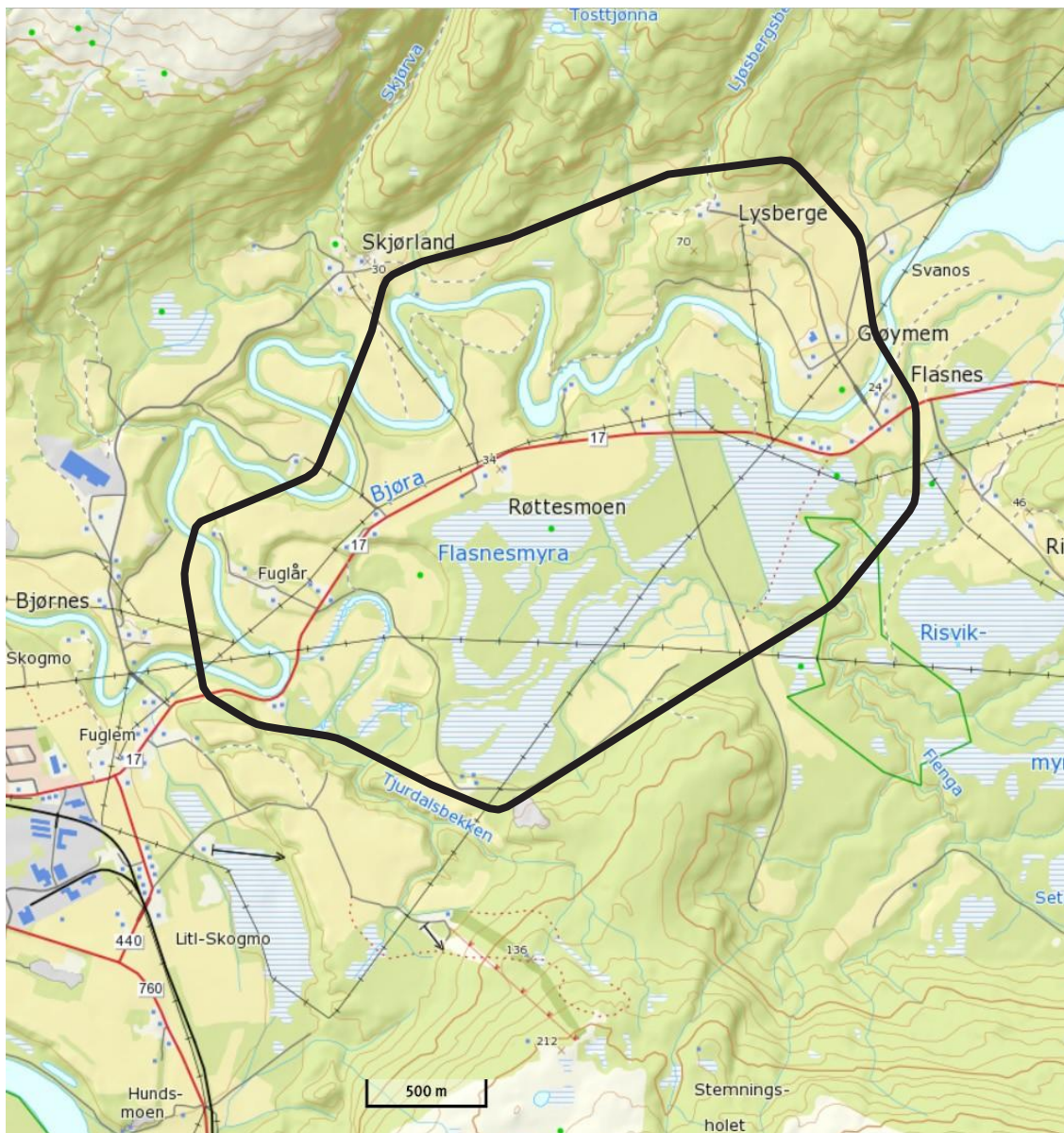


Rode 1



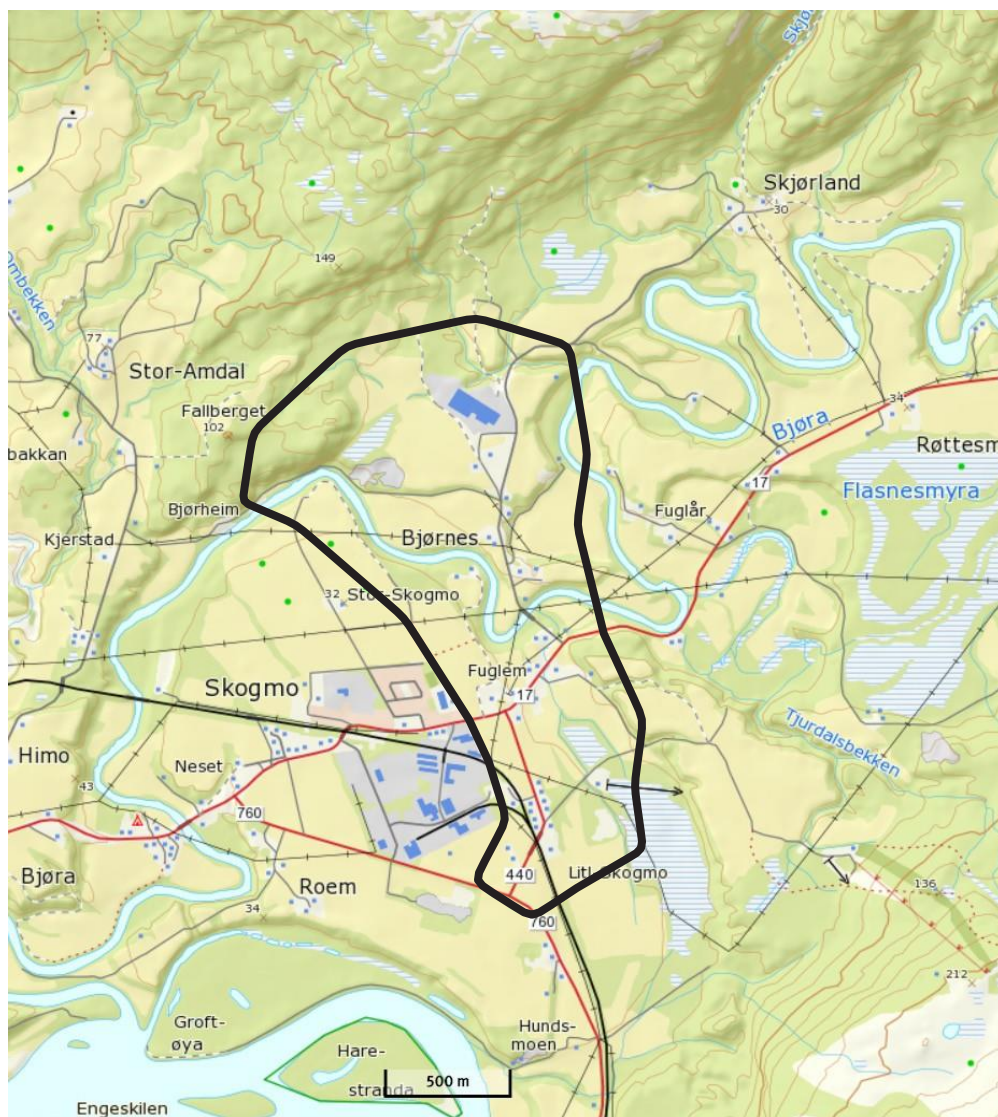
Grense mot Høylandet kommune RV 17 - Reidar Viken m/Risvika - Galgøfta til avkjørsel mot Lysberg.

Rode 2



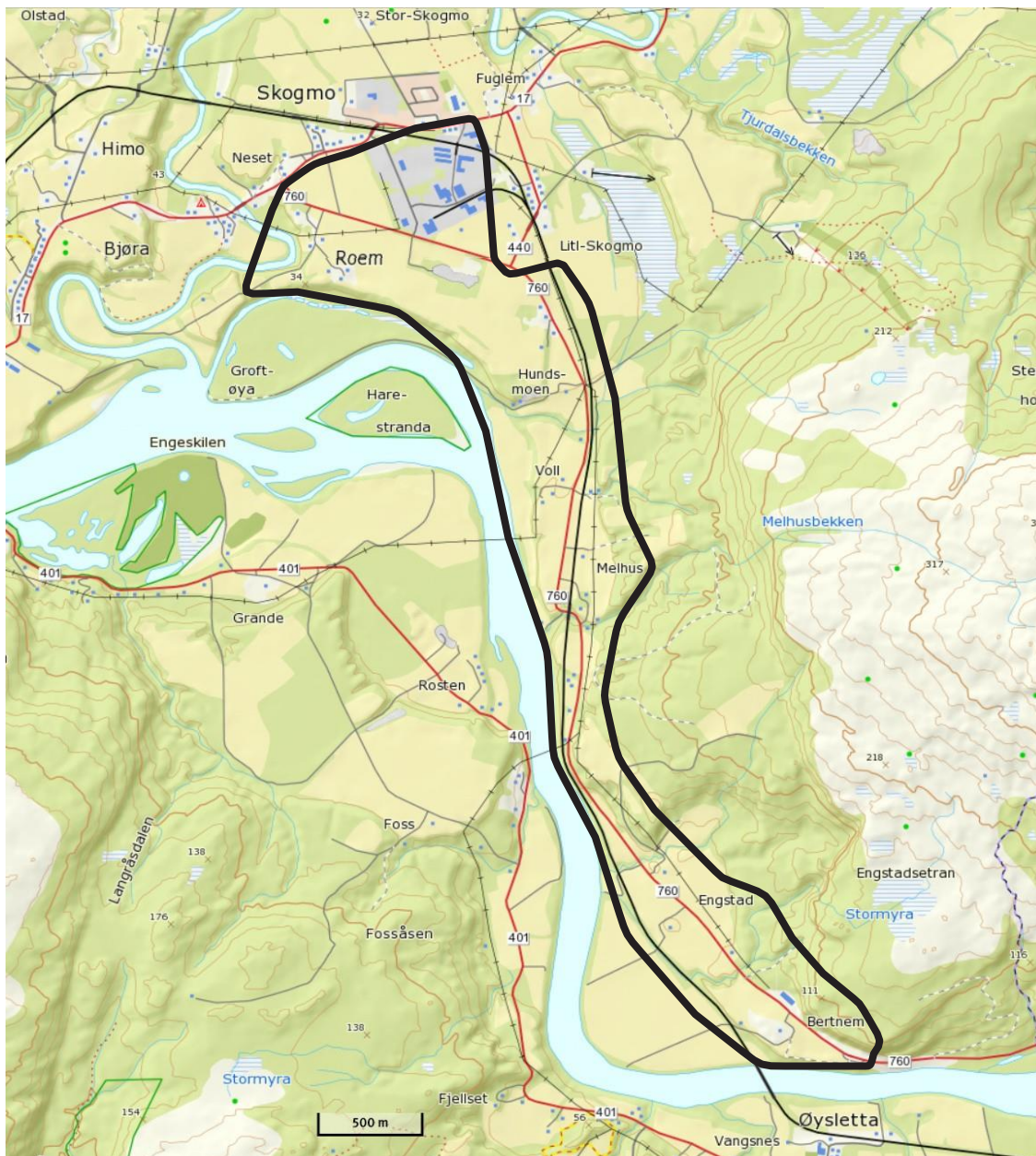
Lysberg - Glømmen - Flasnes til avkjørsel mot Skjørland.

Rode 3



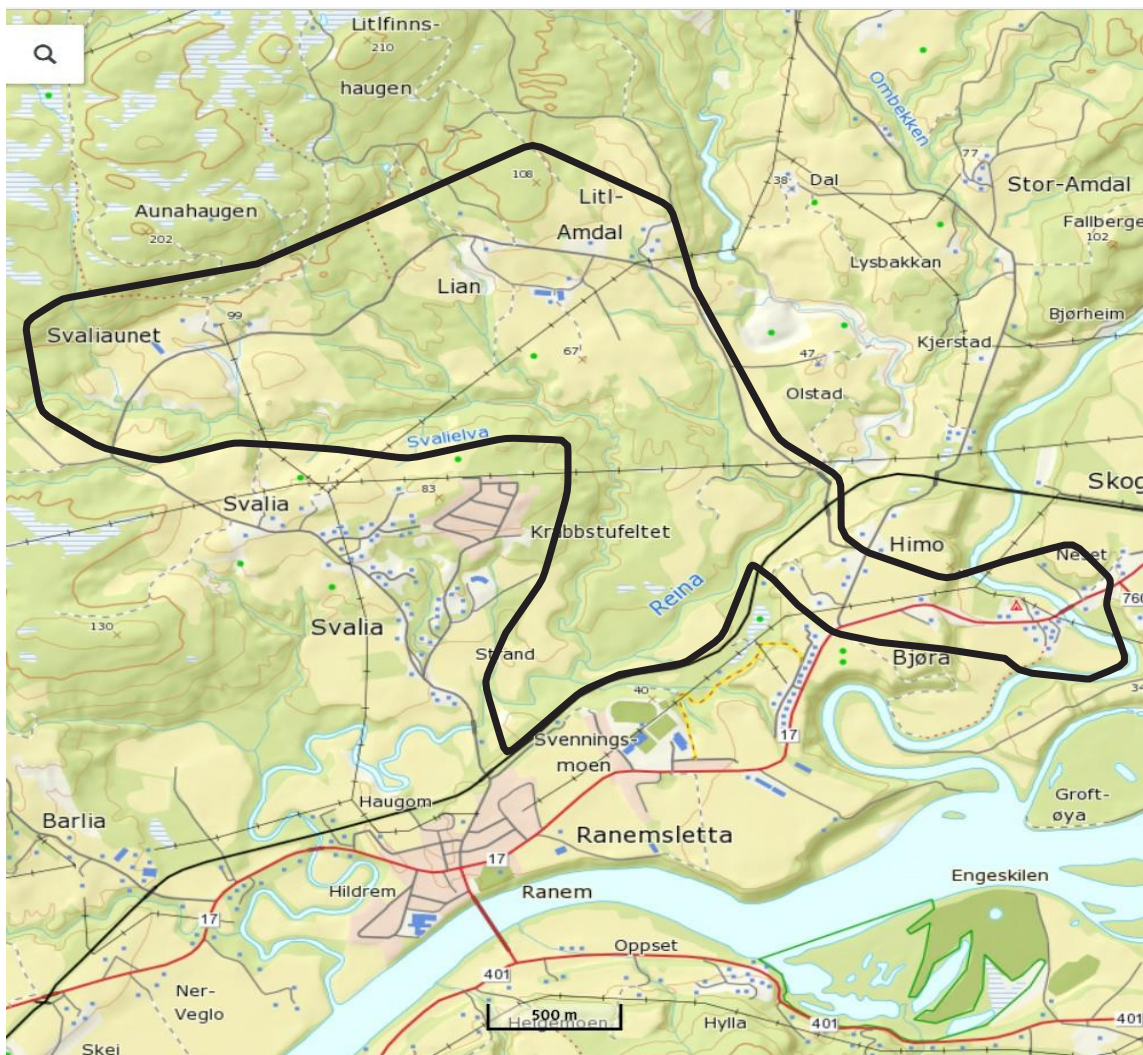
Skjørland - Bjørnes - Fuglum - Lille-Skogmovegen til kryss Rv760.

Rode 4



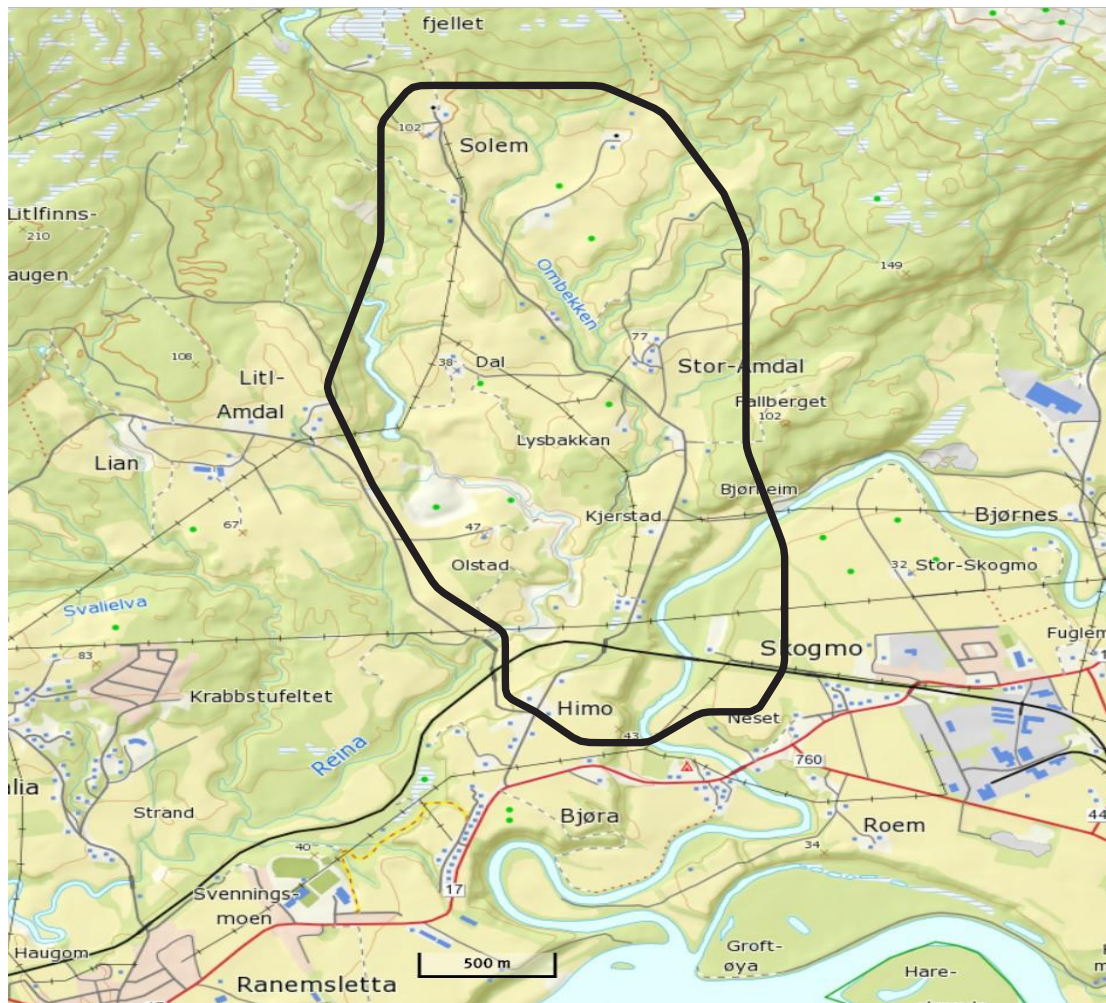
Rodum til Bertnem.

Rode 8



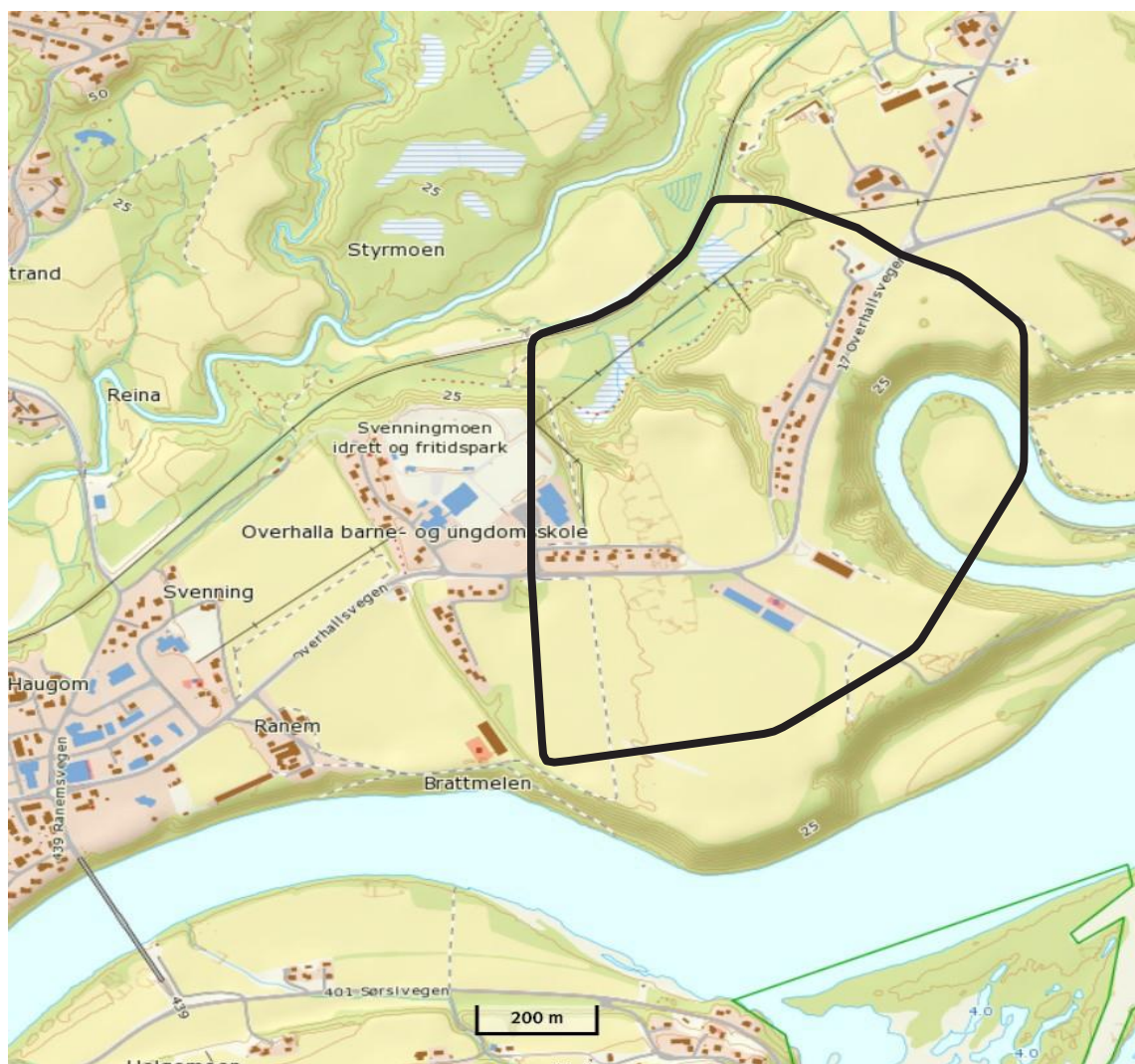
Bjørakrysset Rv 17/Rv 760 – Himo – Lille Amdal – Svarliaunet.

Rode 9



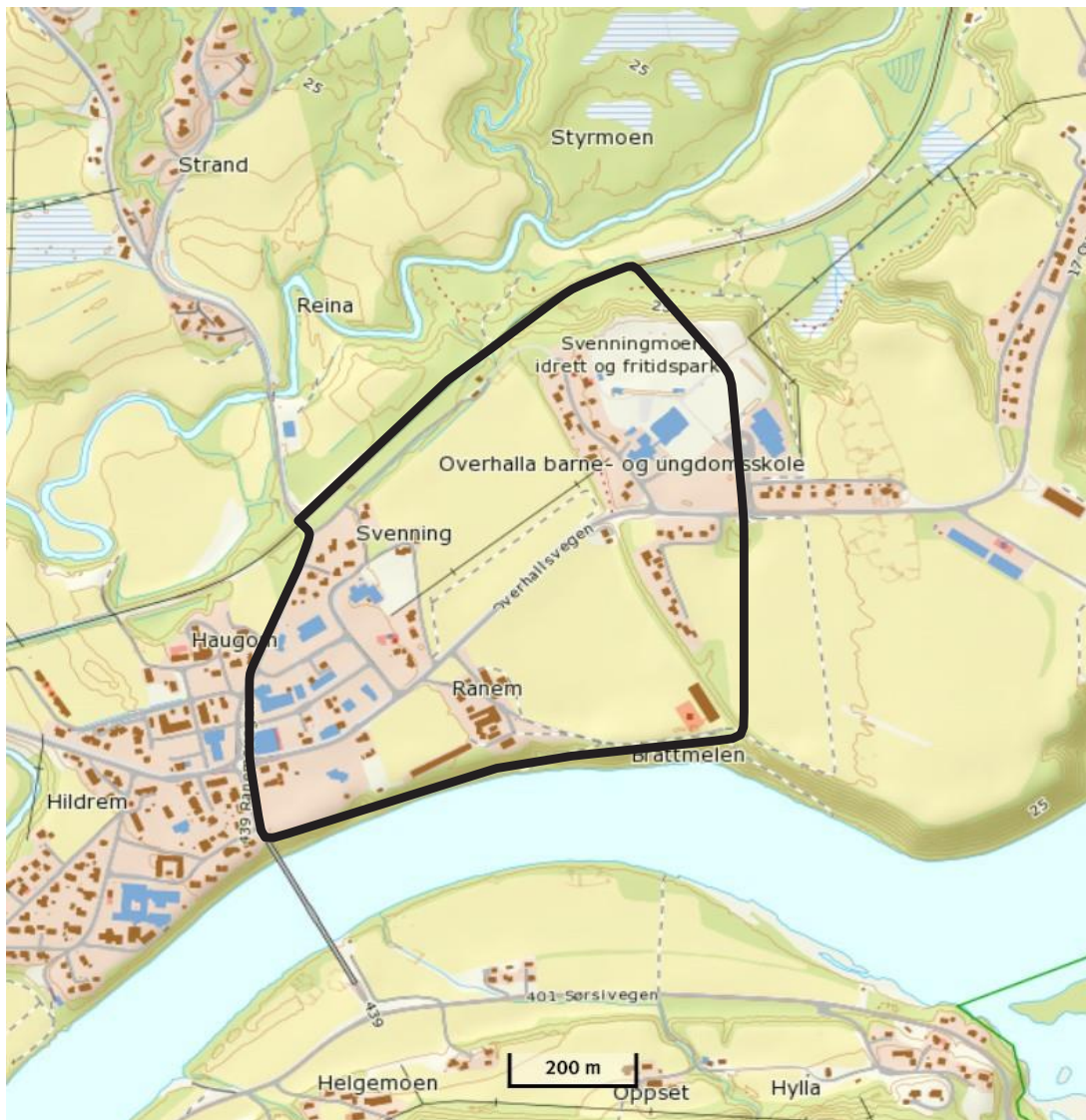
Kalvetrøen – Solum.

Rode 10



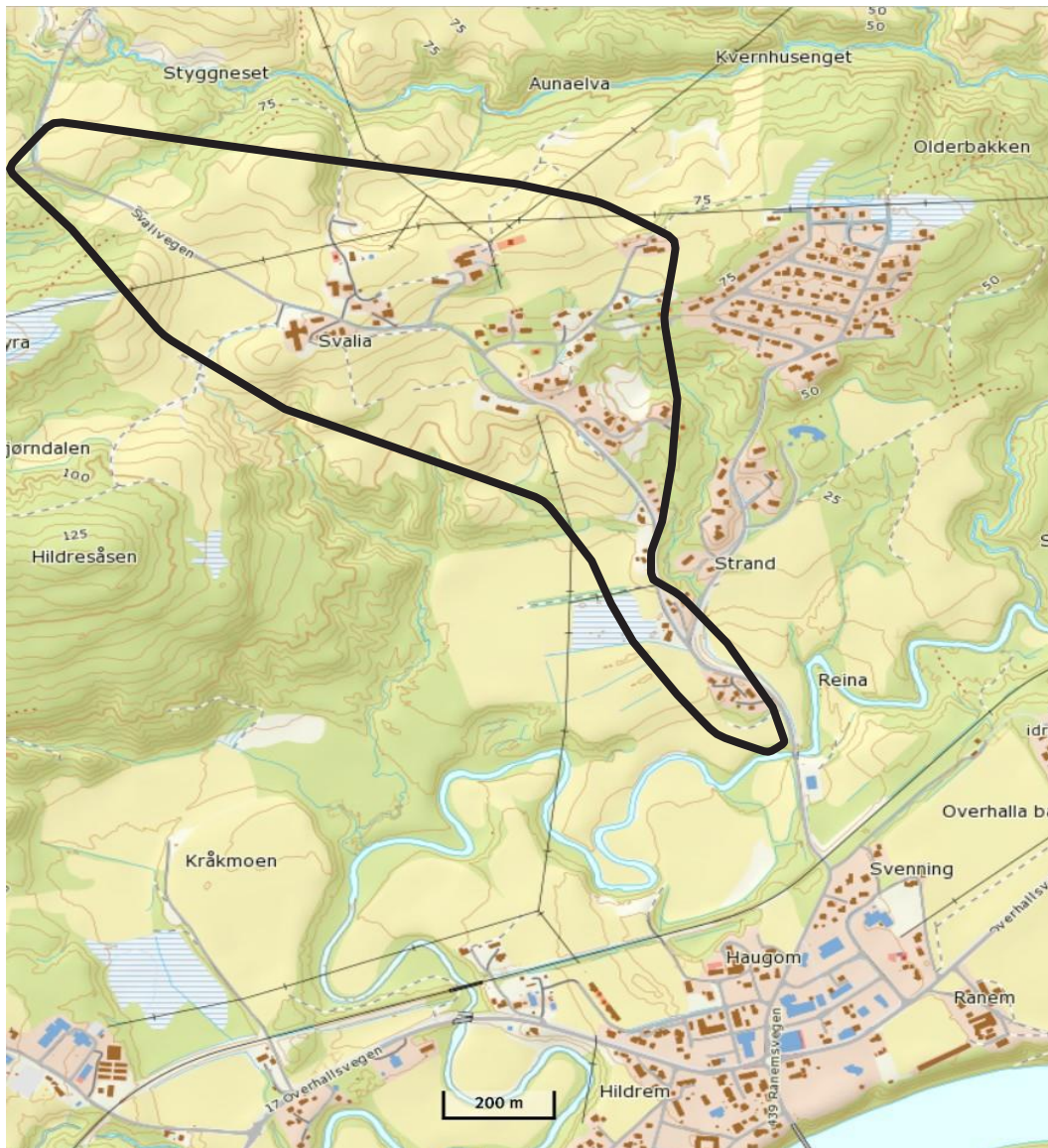
Fra kryss på Himo Rv 17 til avkjøring til skolen.

Rode 13-14



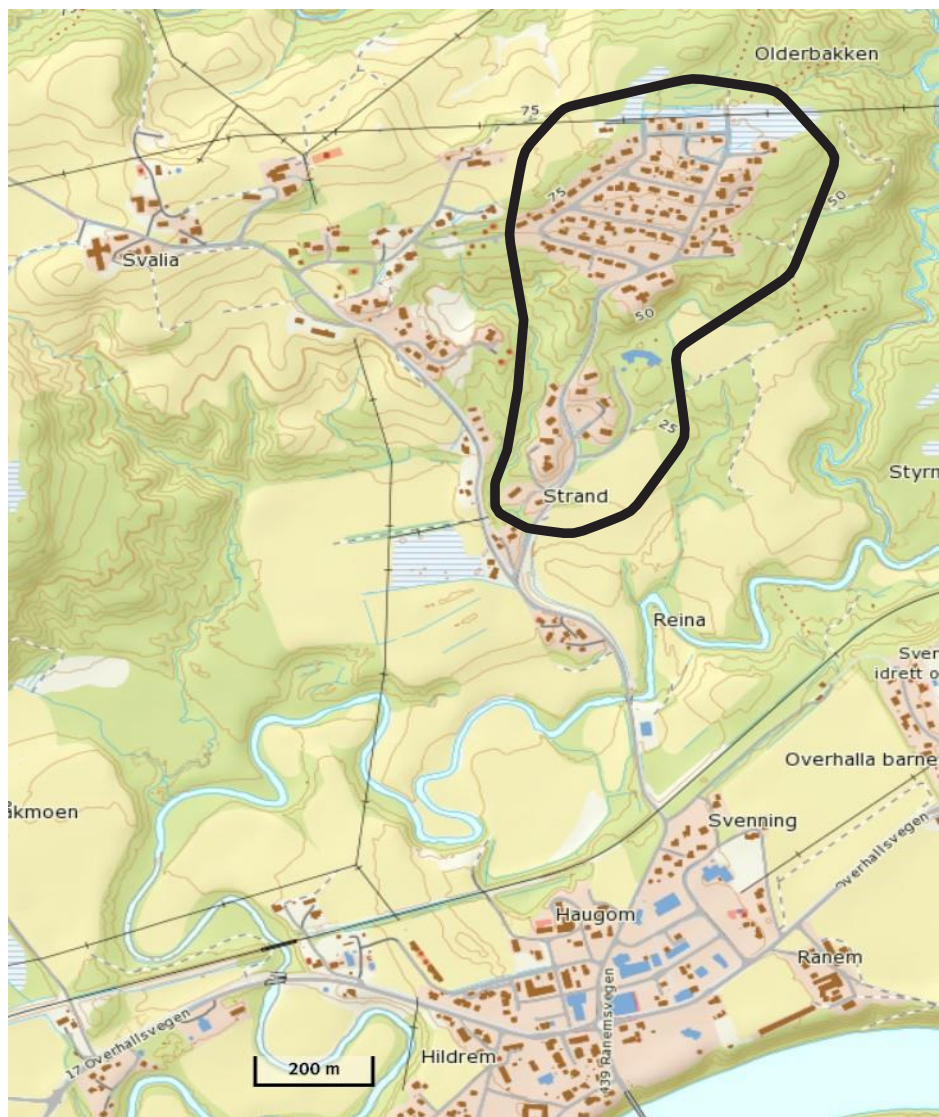
Fra skolen til Ranem bru. Svarlivegen til jernbanen på østre side.

Rode 13-14



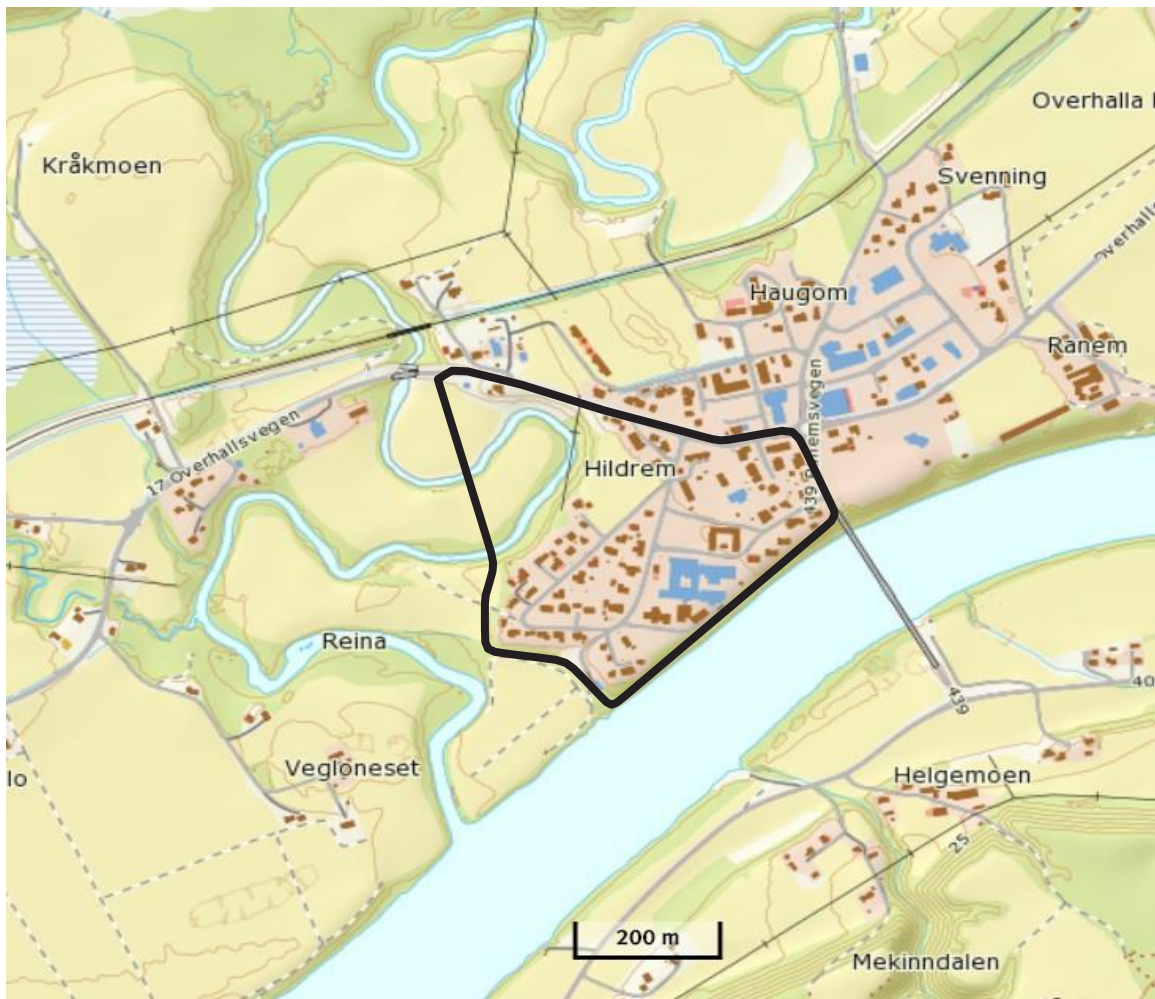
Fra jernbane på Svarlivegen til Svarlien

Rode 15-16



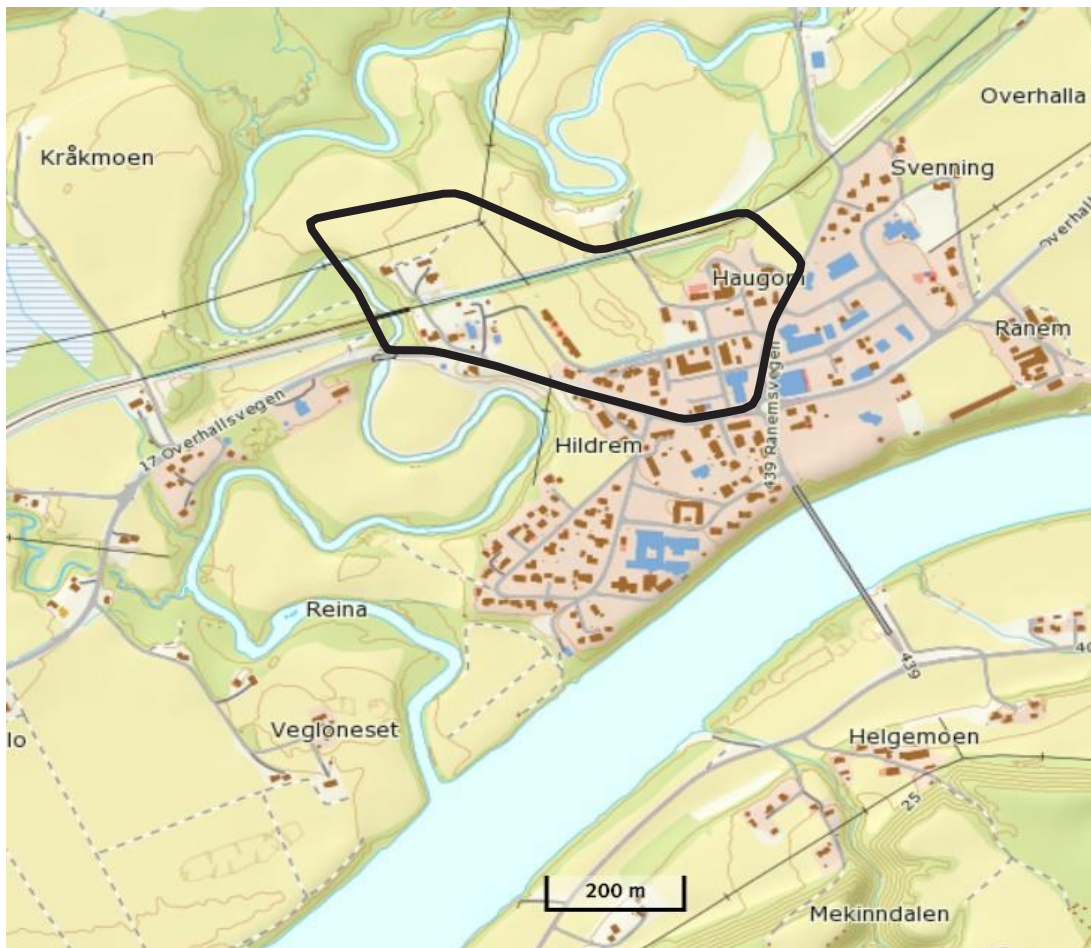
Fra kryss på Svarlivegen t.o.m. Krabbstumarka.

Rode 17-18



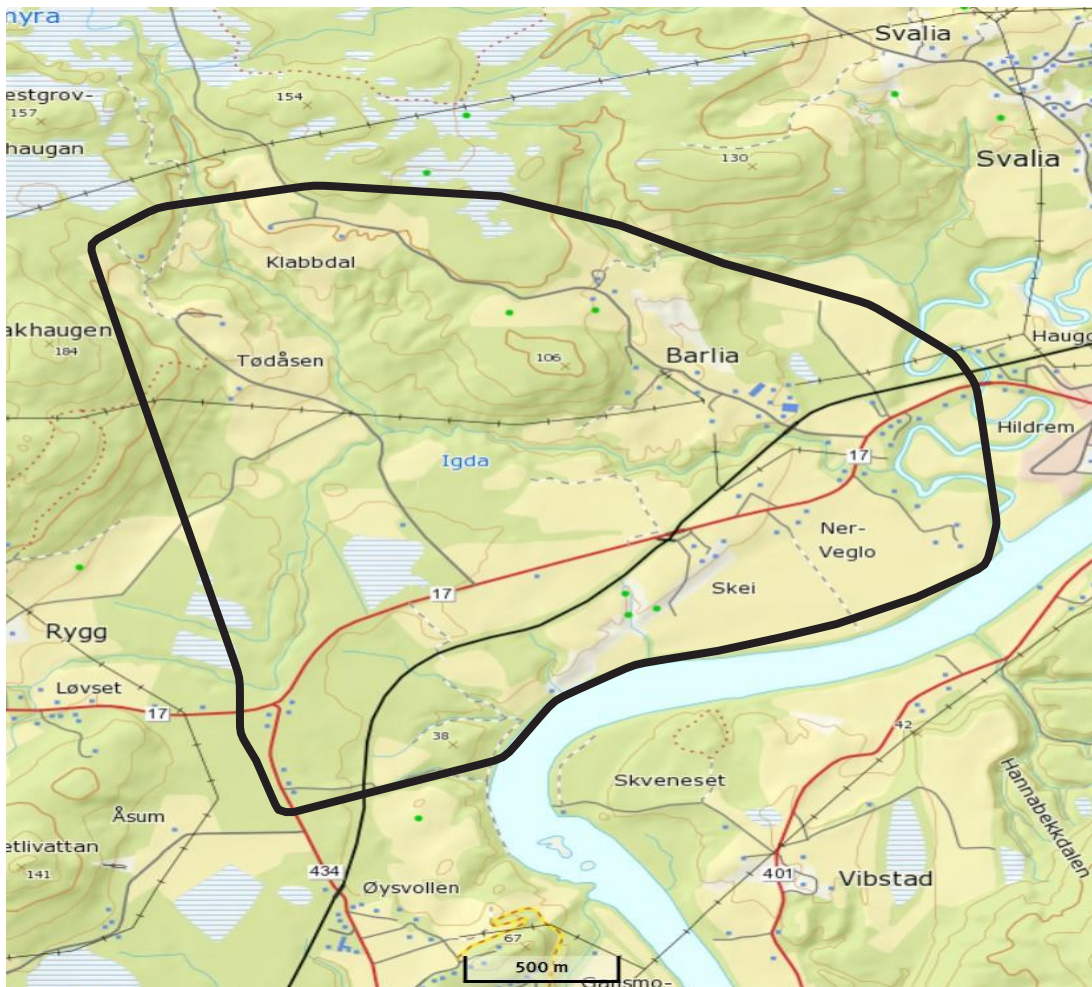
Kryss Rv 17/Ranem bru – sør for Rv 17 til Reina bru.
(Ferjemannsvegen).

Rode 19



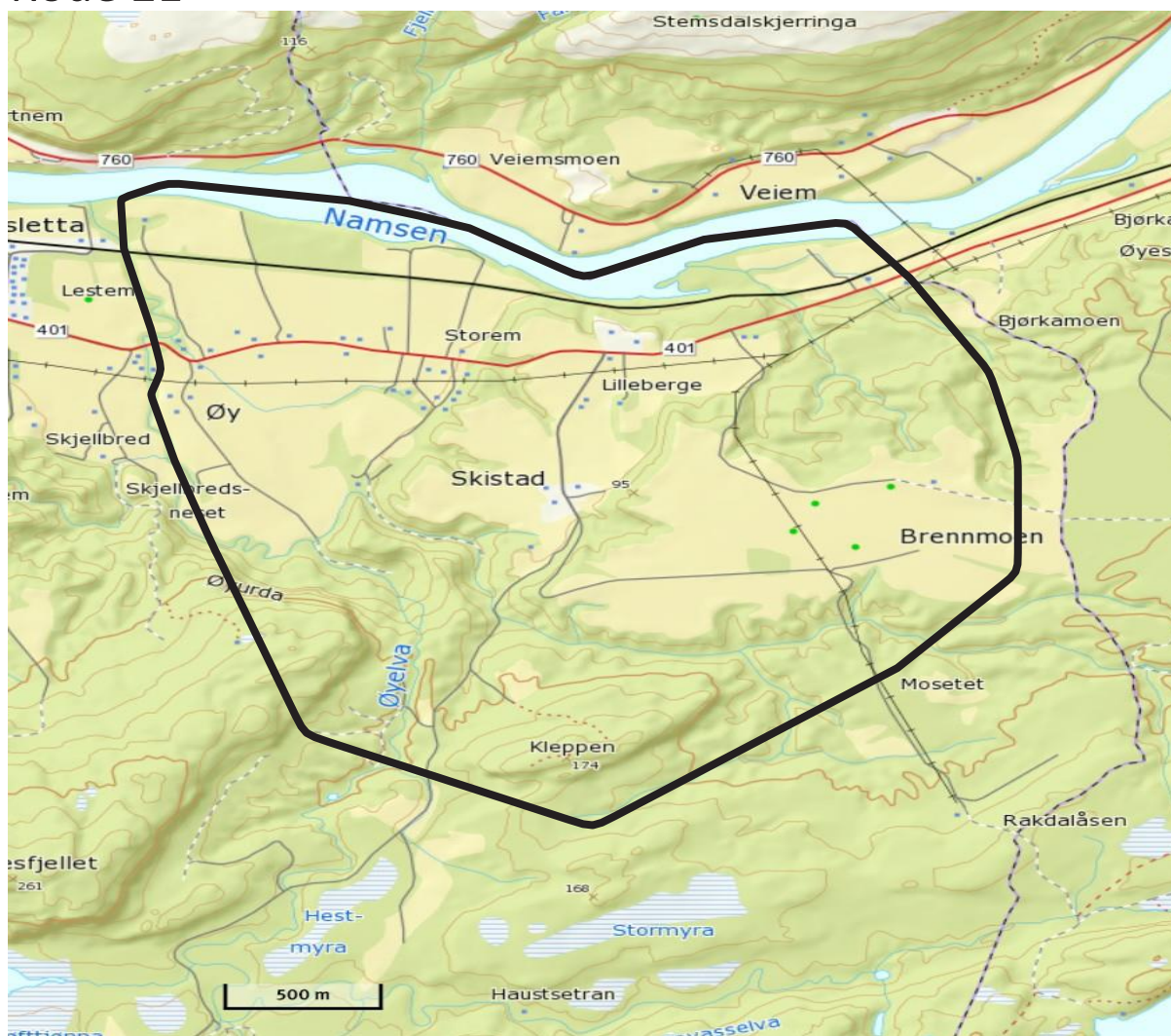
Hildremstunet – Slettajordet – Torstadtunet.

Rode 20



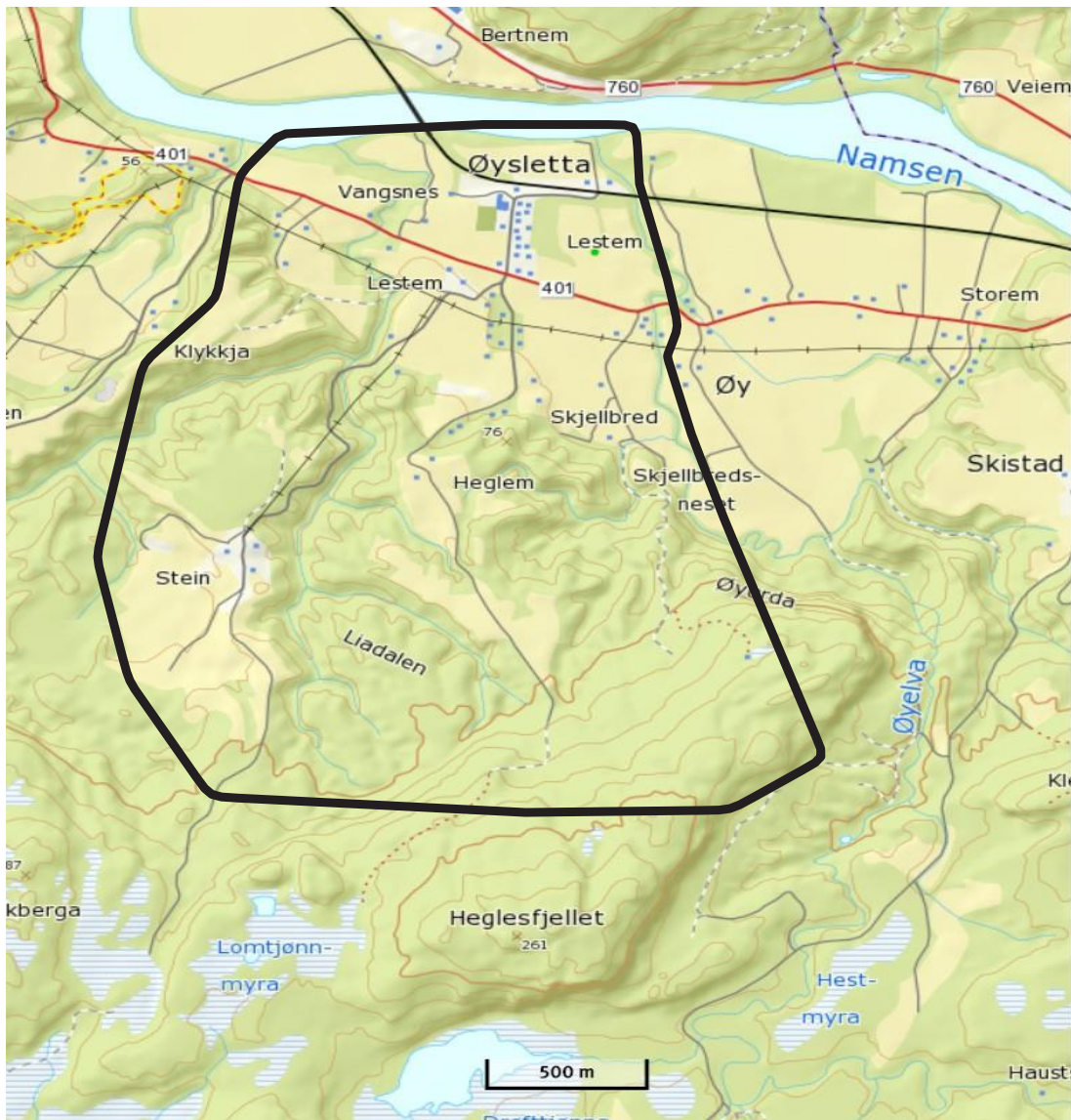
Reina bru Rv 17 – kryss mot Øyesvold (+ de fire husene fremst på Øyesvoldkorsen).

Rode 21



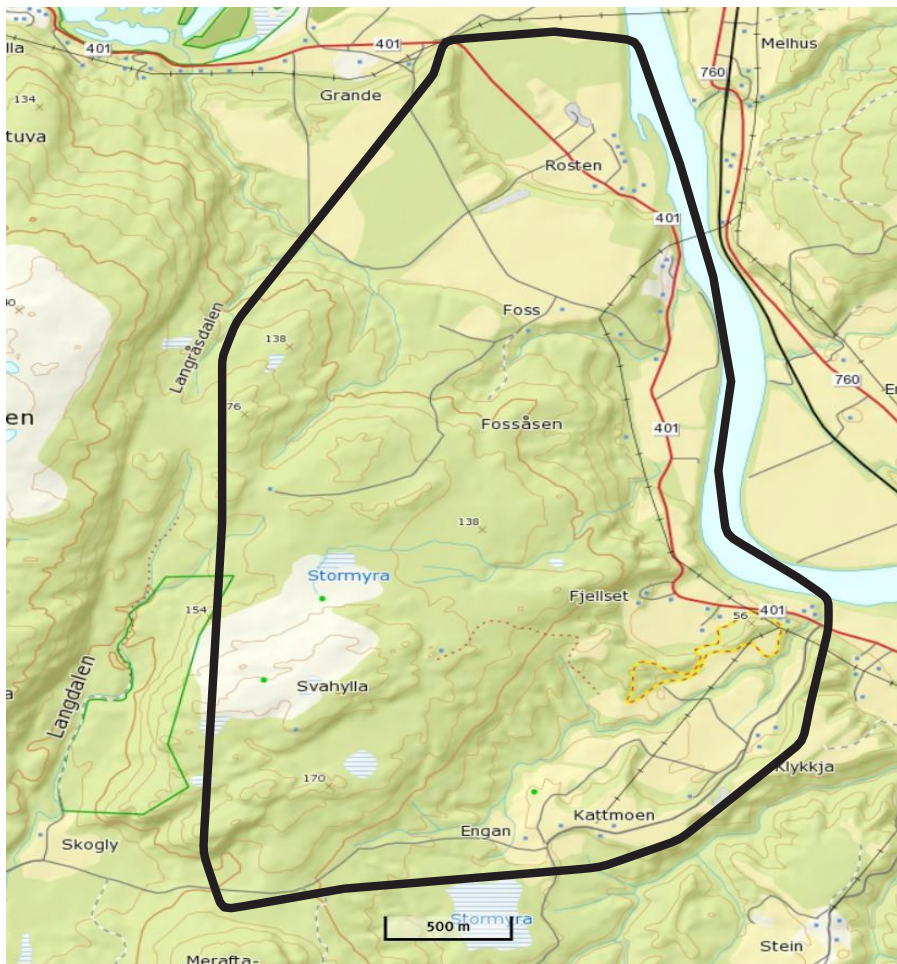
Grong-grensa til Øybrua.

Rode 22



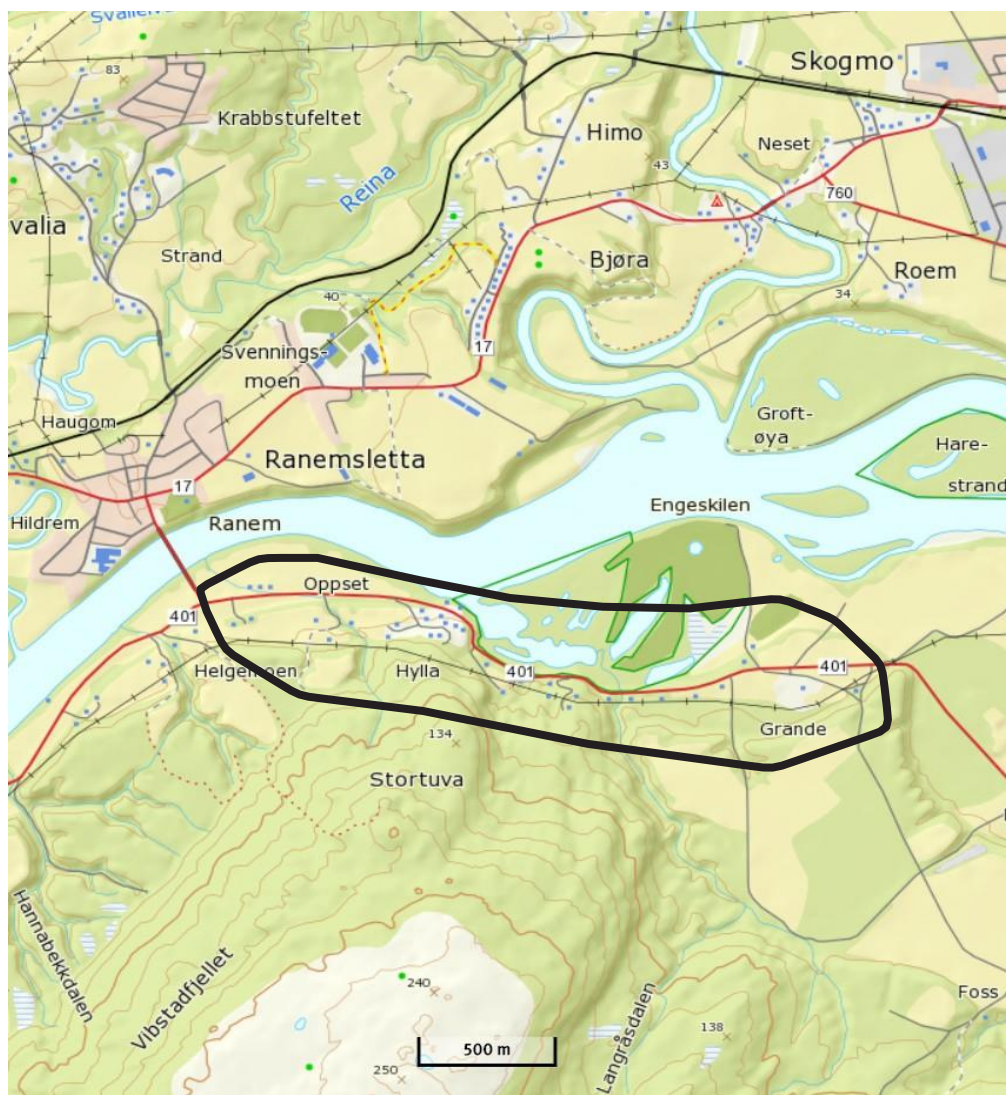
Fra Øybrua t.o.m. Engan.

Rode 23



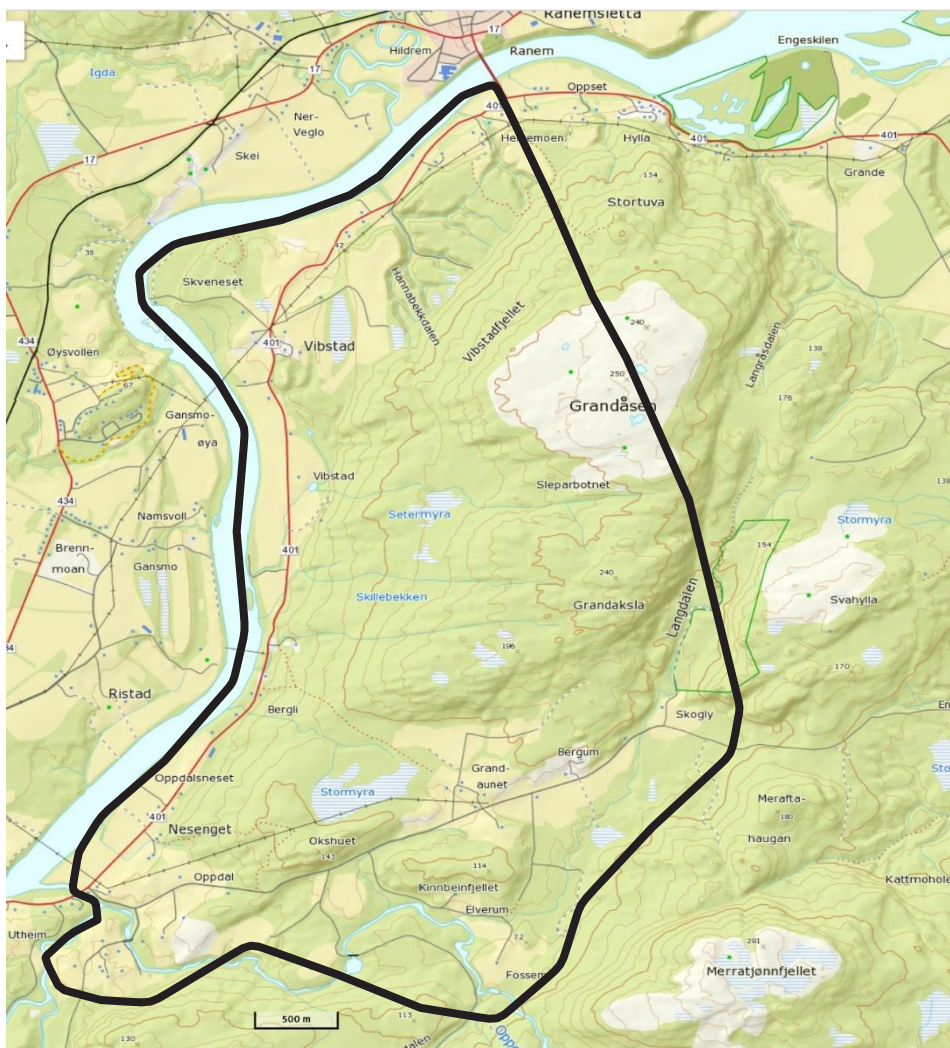
Engankrysset t.o.m. Grøte , Rosten og Foss.

Rode 24



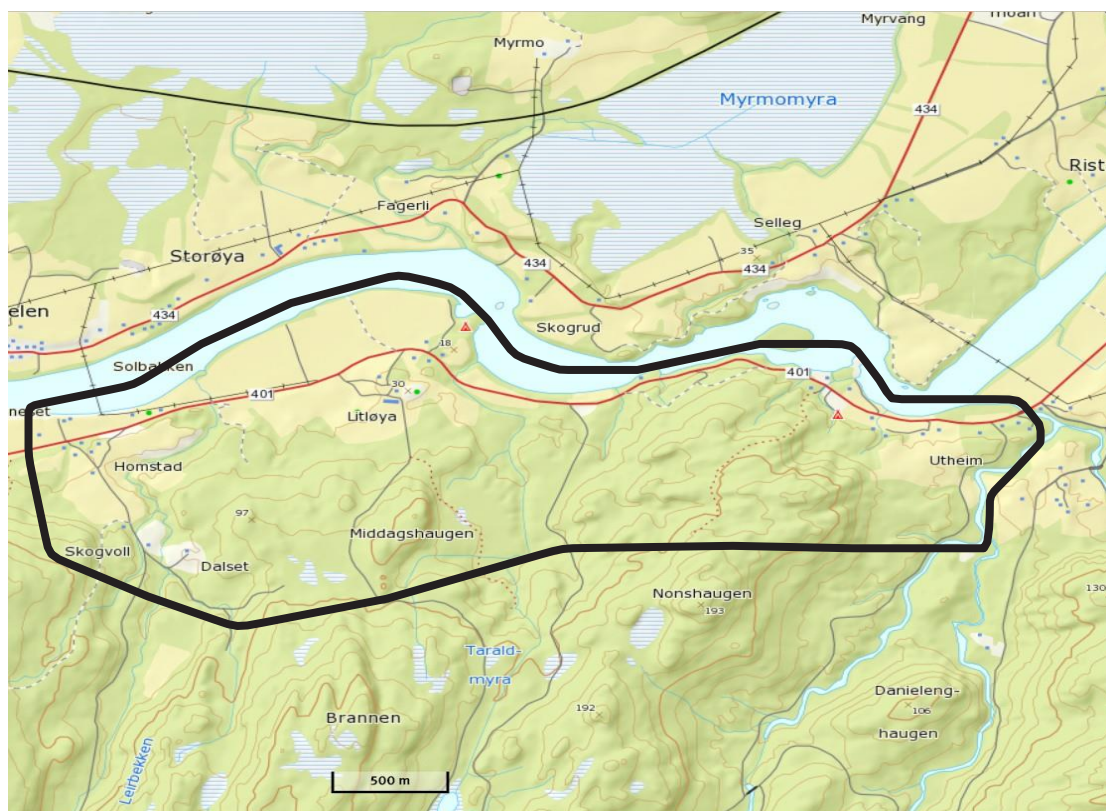
Grande til Ranemsbrua.

Rode 25



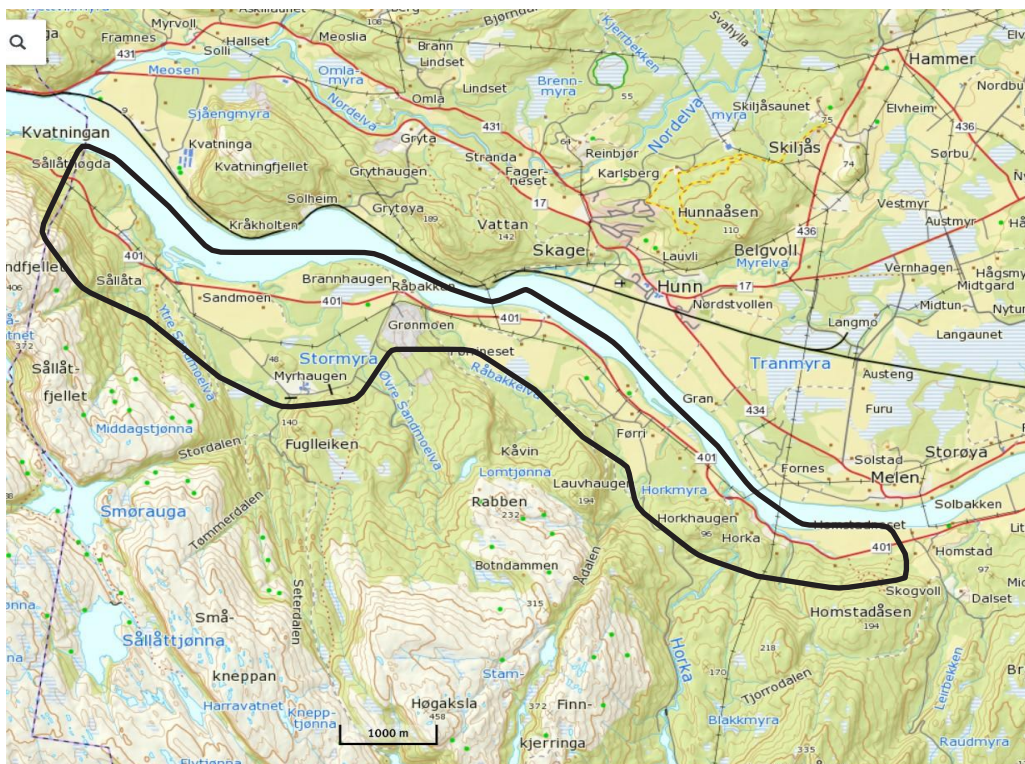
Ranem bru – Oppdal bru og Grandaunet.

Rode 26



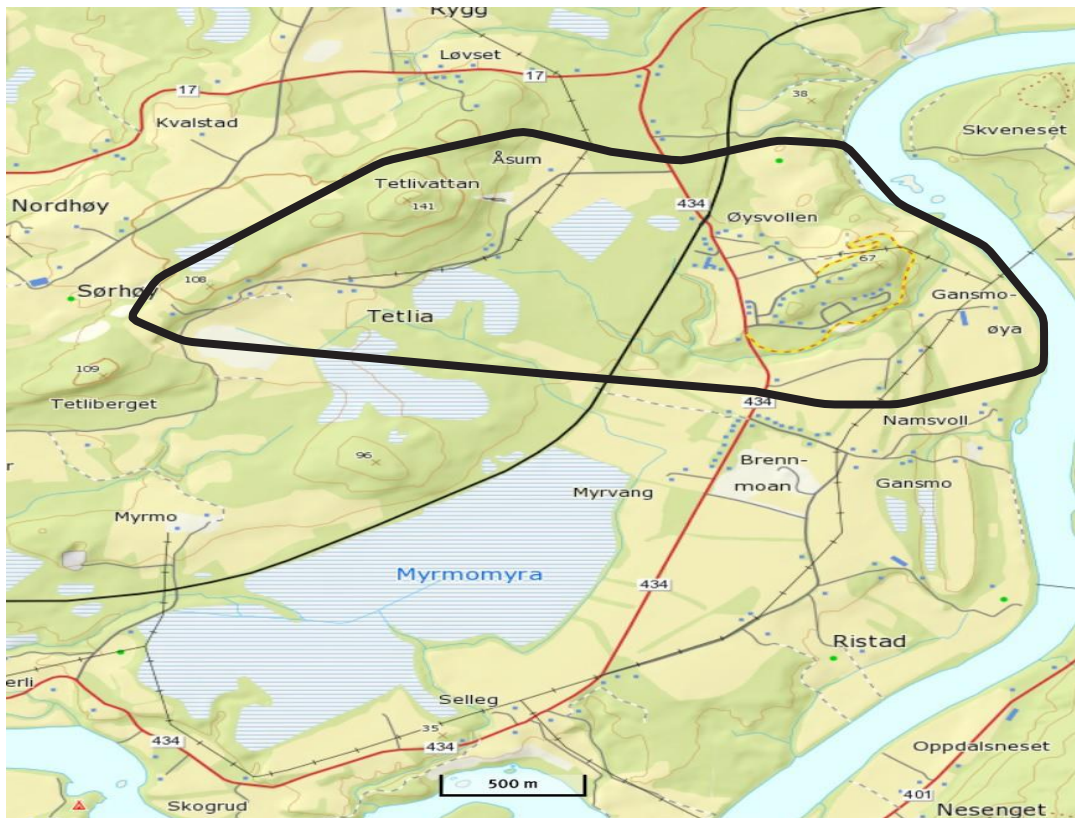
Opdal bru – Homstad ink. Vesteråvegen.

Rode 27



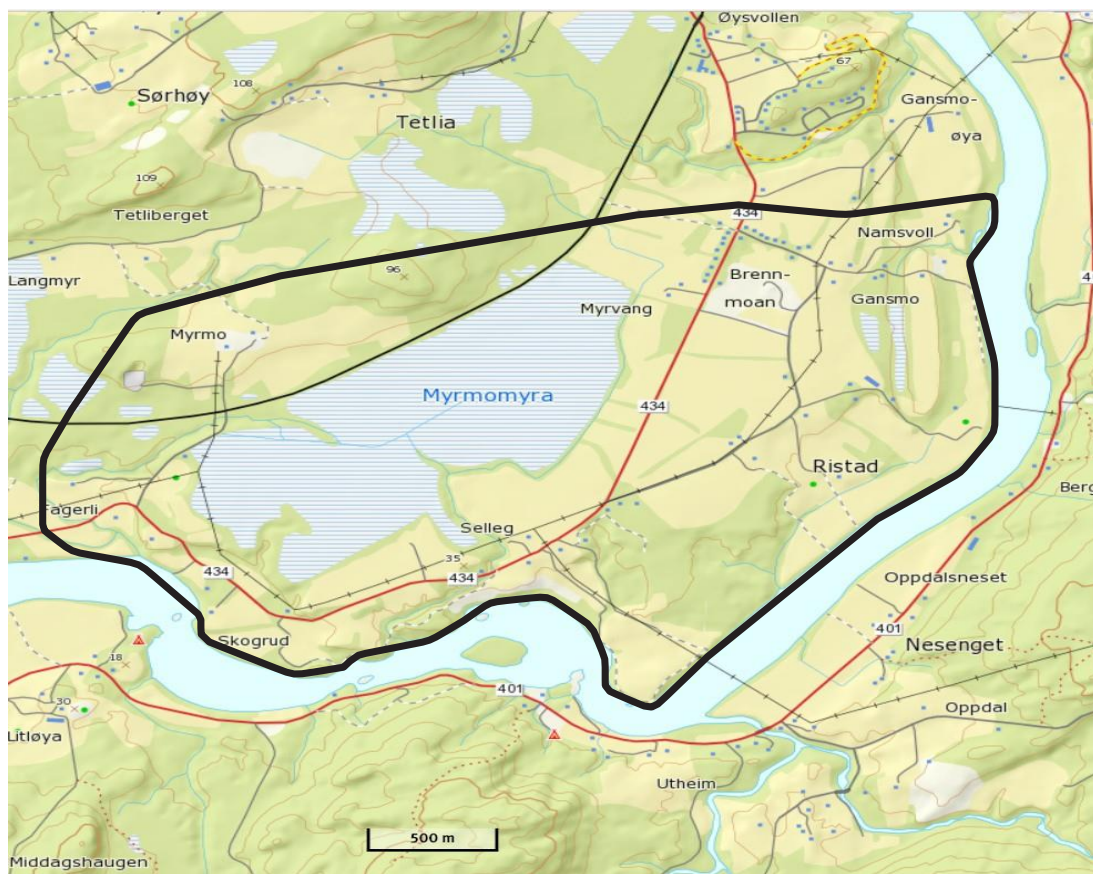
Kryss Vesteråvegen – grense Namsos Fv. 401.

Rode 28



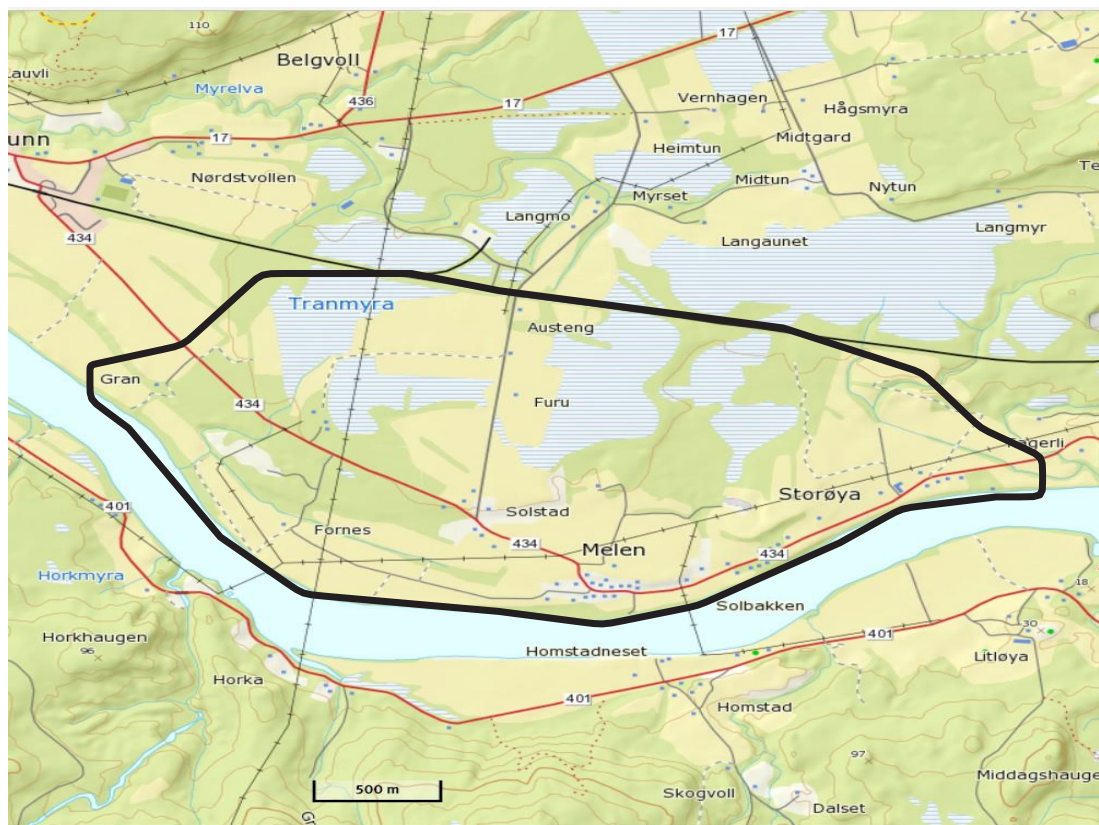
Øyesvoldkorsen – Moan.

Rode 29



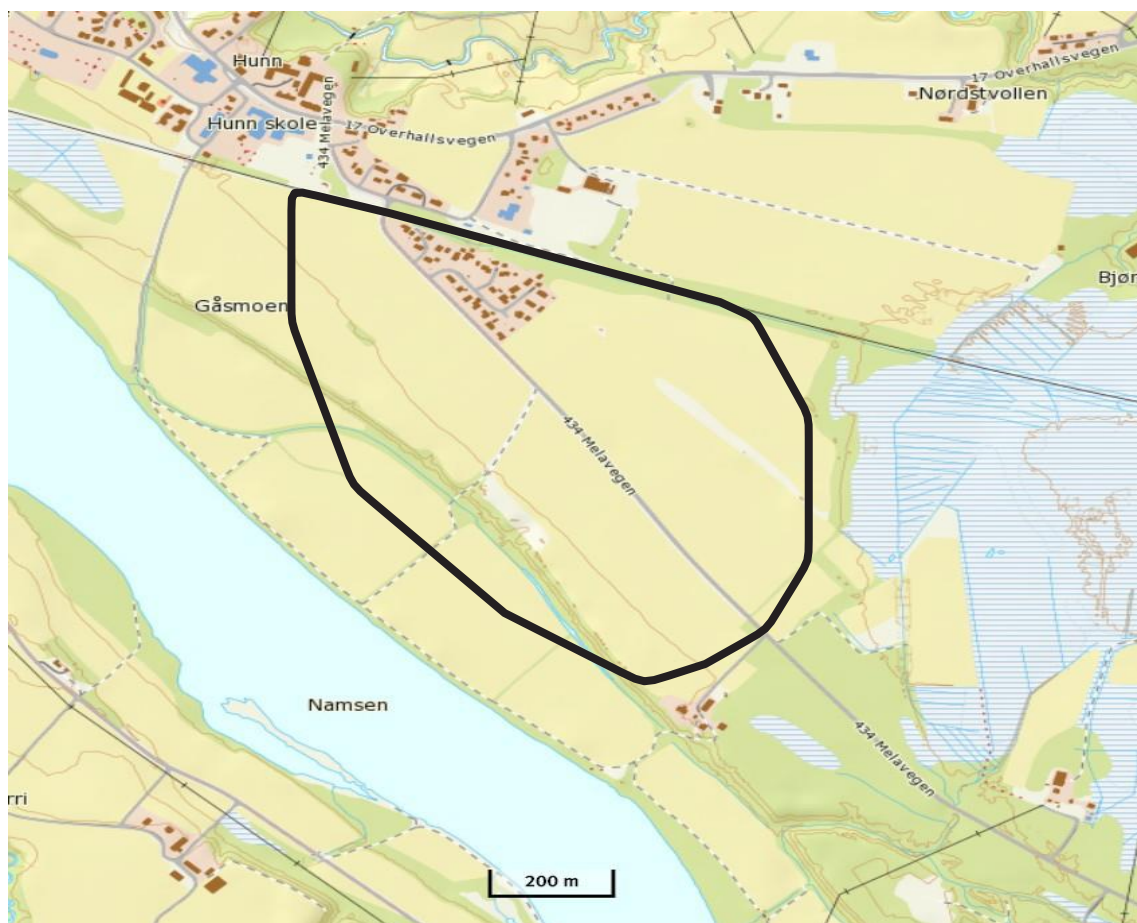
Fra Moan – t.o.m. Fagerlia.

Rode 30



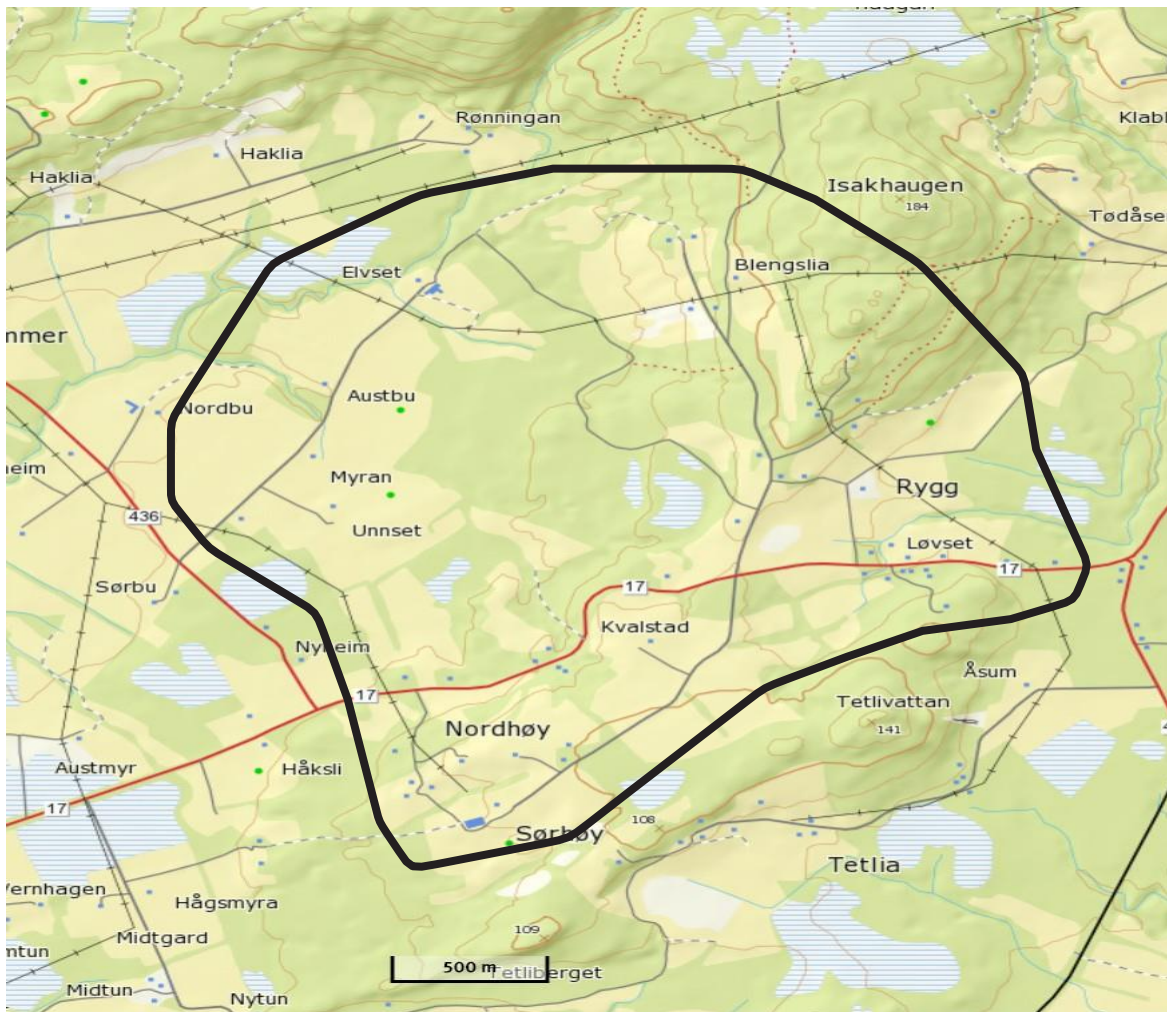
Fra Fagerlia – t.o.m. Gran.

Rode 31



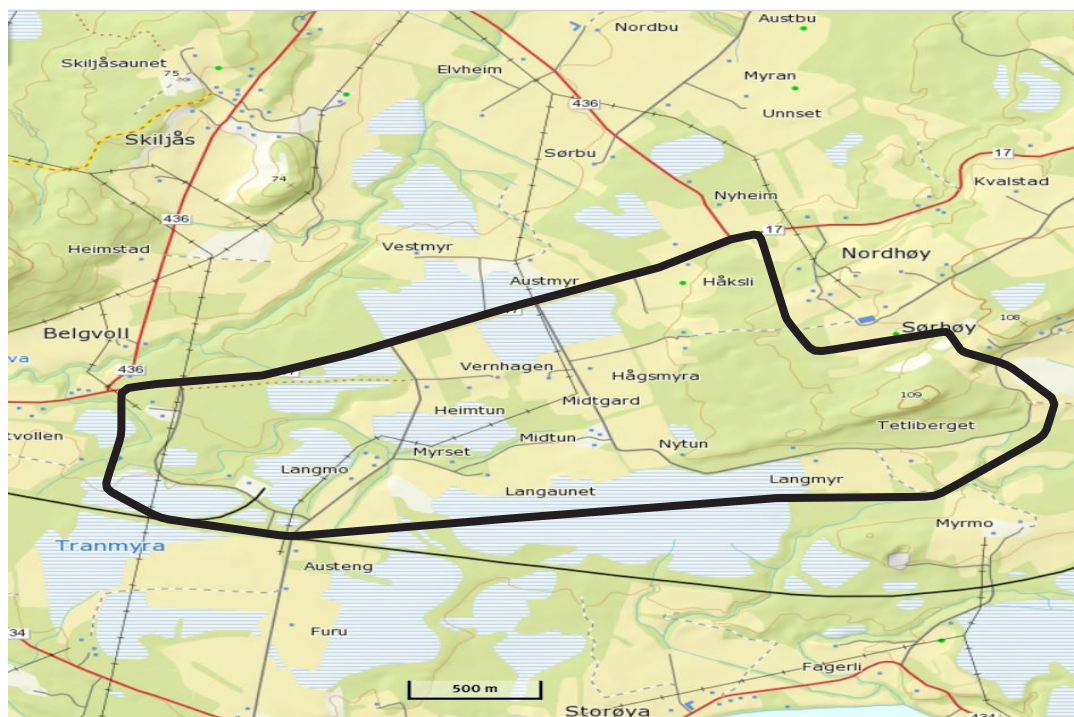
Kroken til jernbanen.

Rode 32



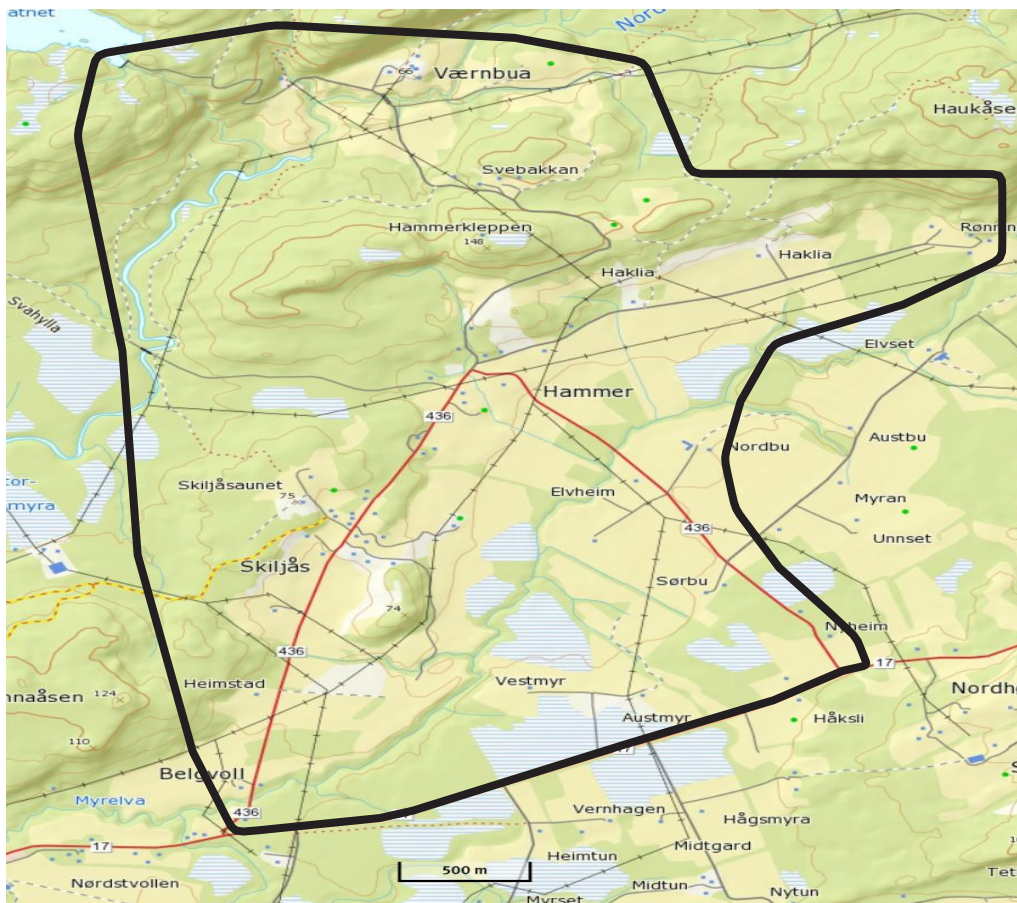
Øyesvoldkorsen – Høy – Blengsli – Kvalstadsvingene til Hammerkorsen.

Rode 33



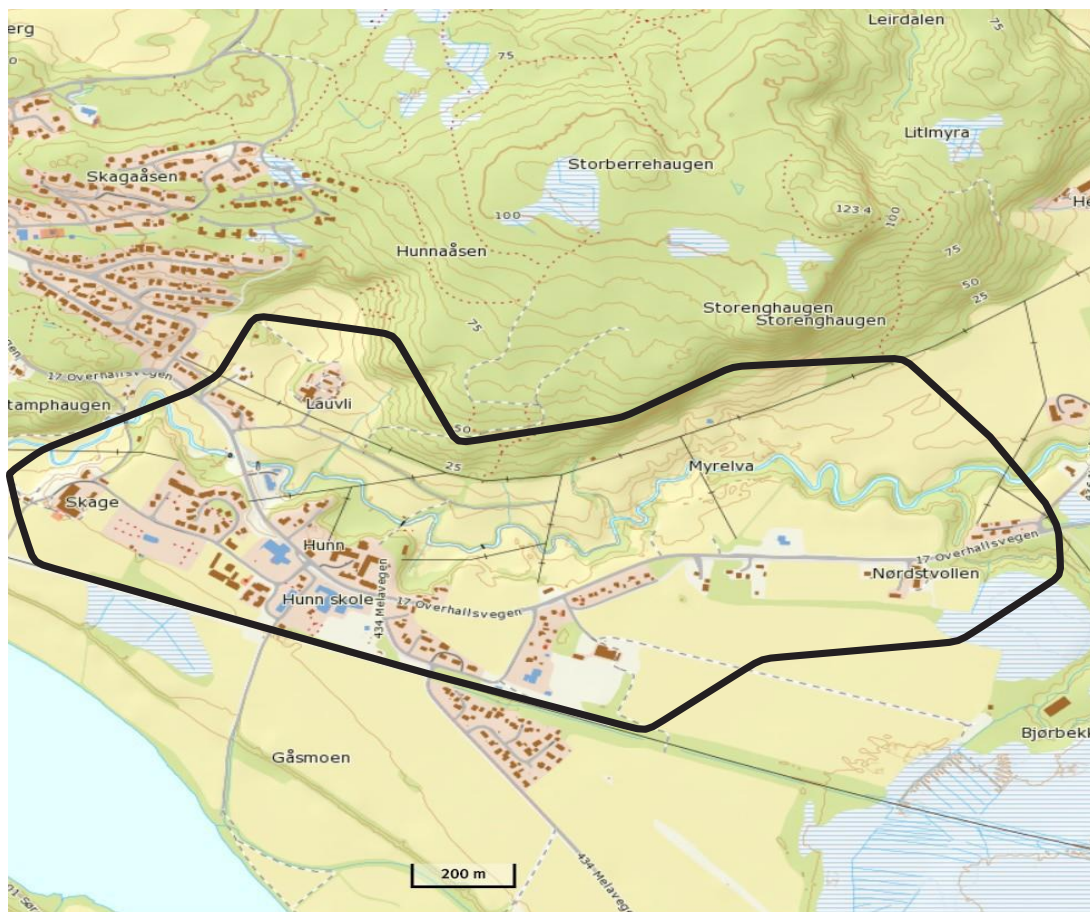
Hammerkorsen – Myra til jernbanen. (Tranmyra).

Rode 34



Hammer / Vannebo – alt nord for Rv 17. (Nordgården).

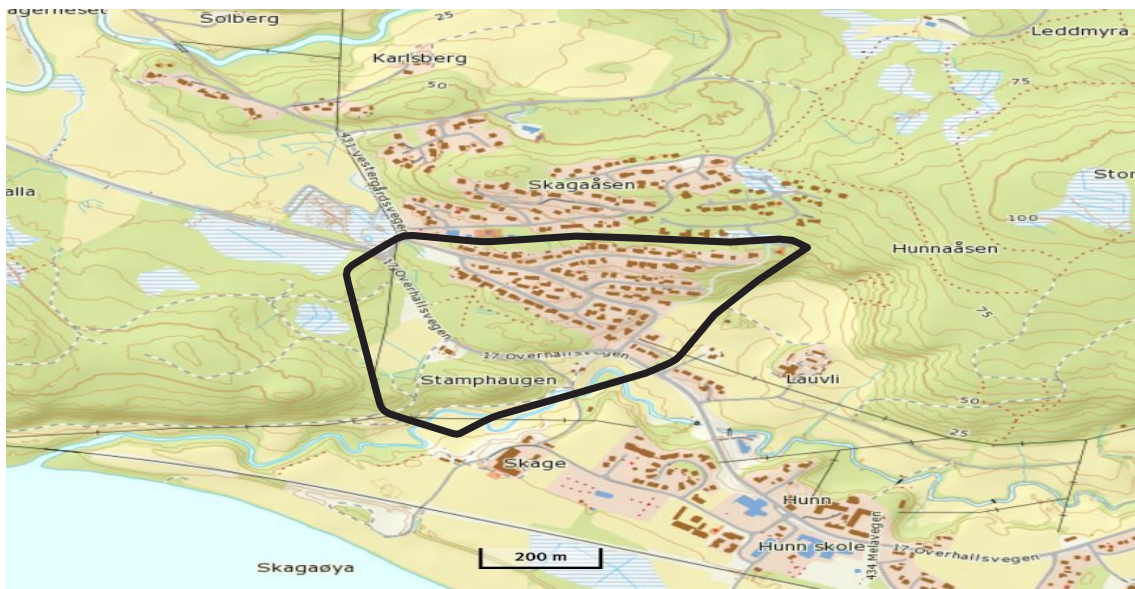
Rode 35



Kryss Rv 17 / Belle vold – Hunn til jernbaneovergang og kryss Rv 17.

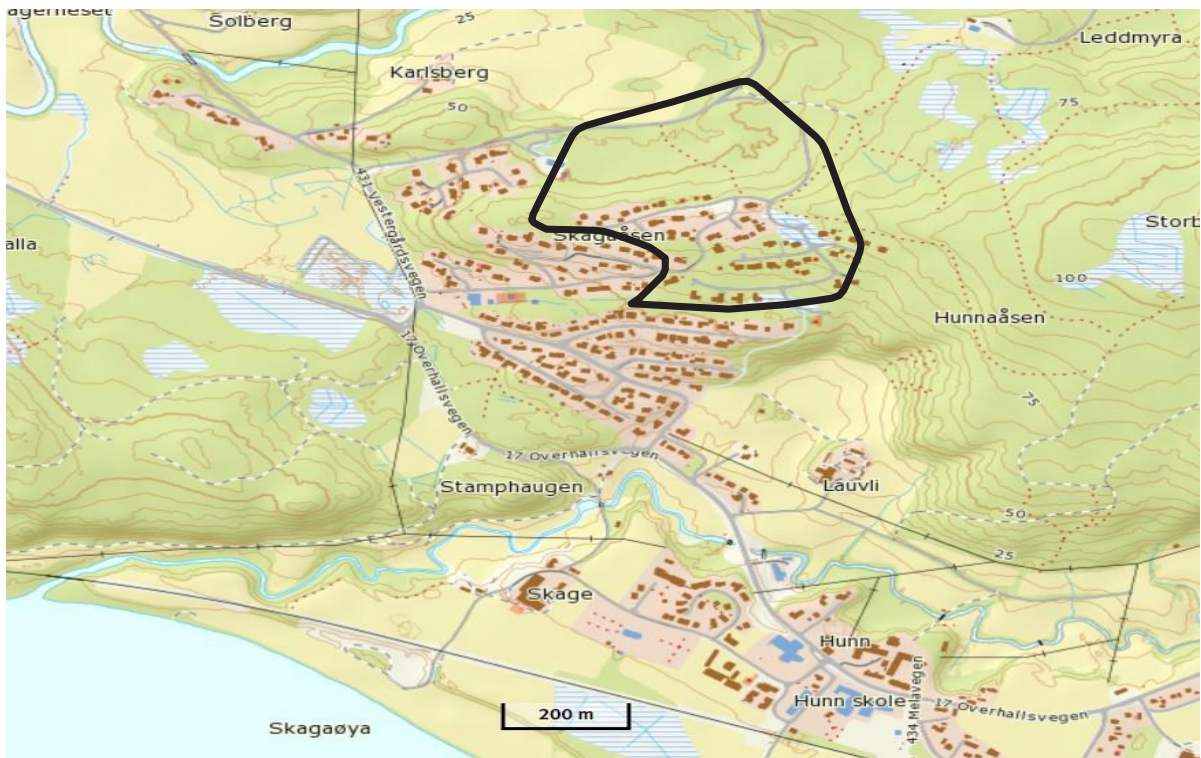
(Med randbebyggelse nord for Rv 17, se kart)

Rode 36



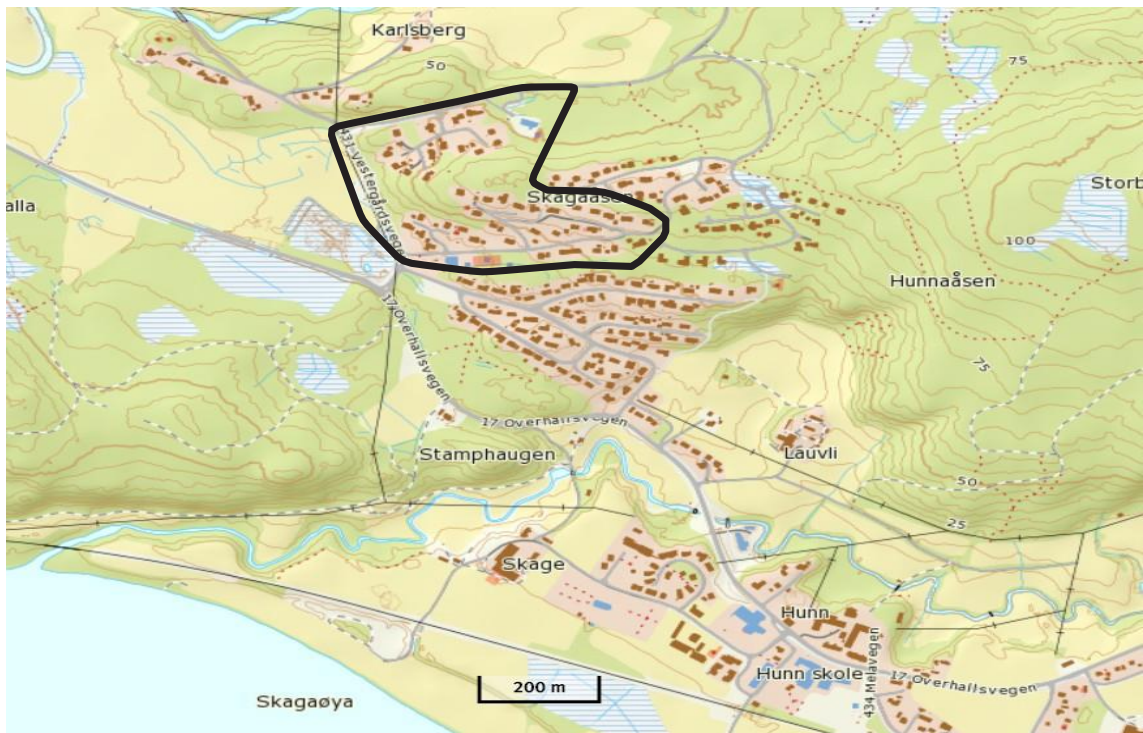
Skage Vest, Langlia og Nerlia (Med randbebyggelse nord for Rv 17, se kart), Midtlia og Øverlia.

Rode 37



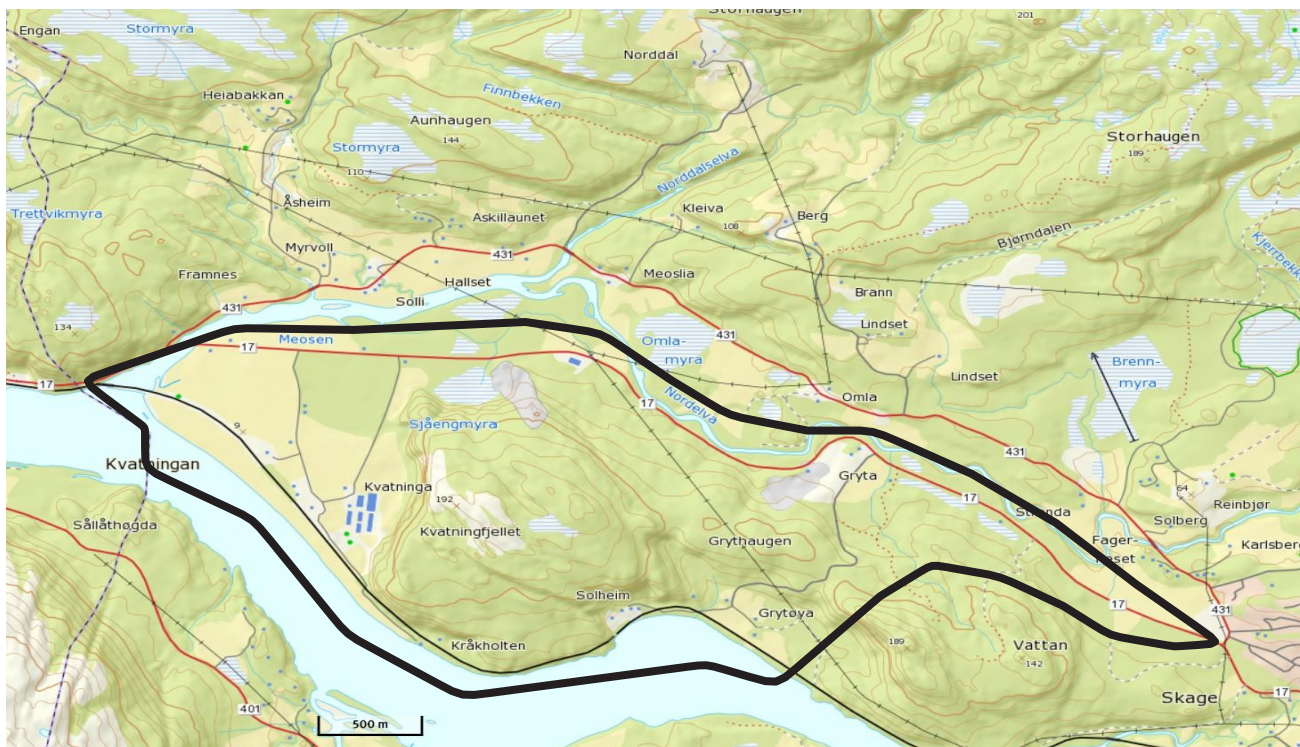
Skageåsen II (Louis Kvalstads Tun, Elliot Kvalstads Tun) og III. (Nordreina, Lissmyra, Hunnaåsen).

Rode 38



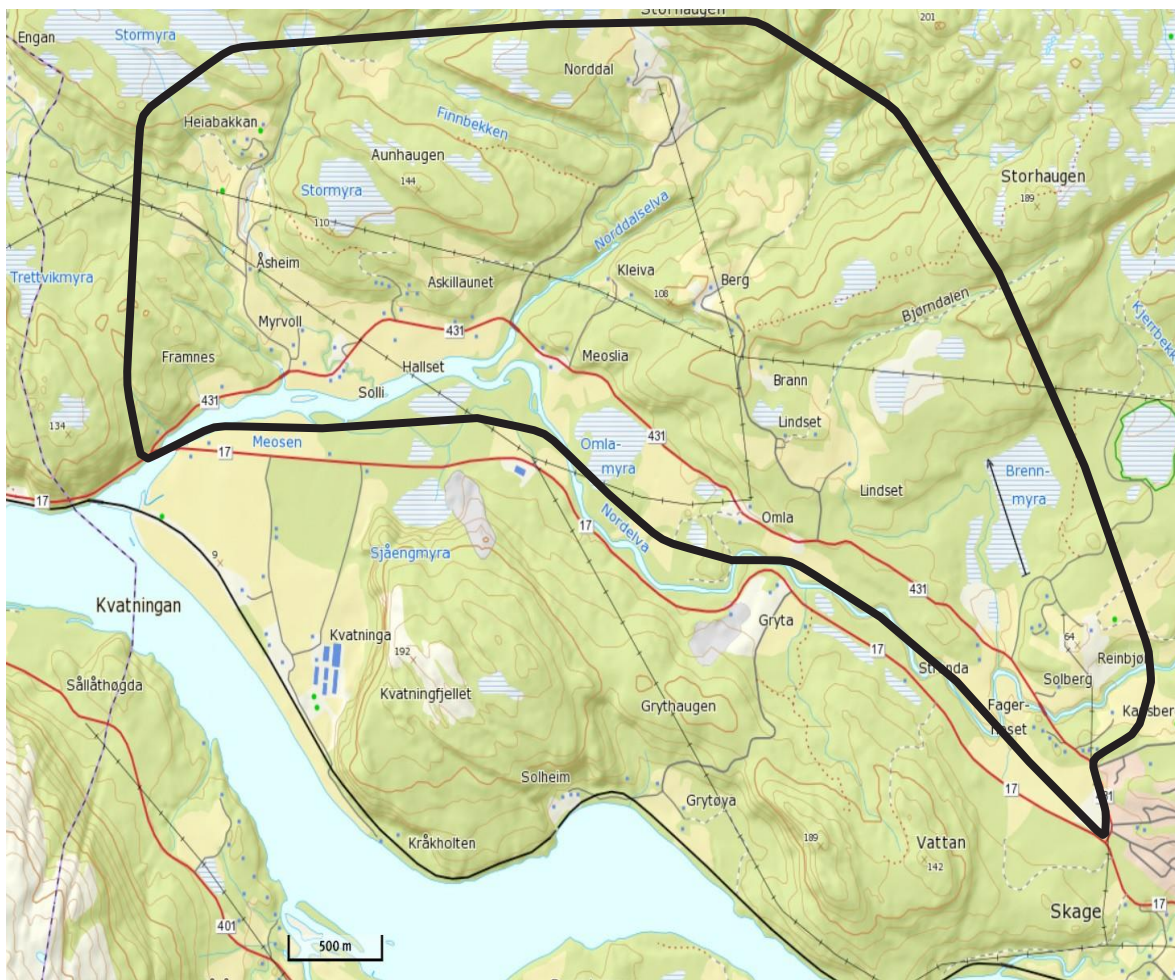
Skageåsen I (Skageåsveien, Nertun, Midttun, Åstun og Øvertun).

Rode 39



Rv. 17 – Reinbjørkrysset – Meosbrua inkl. Grytøya – Kvatninga.

Rode 40



Vestergårdsveien. (Fra Meosen til kryss Skistadion).